

RT230H/RT236/RT231 Quick User Guide

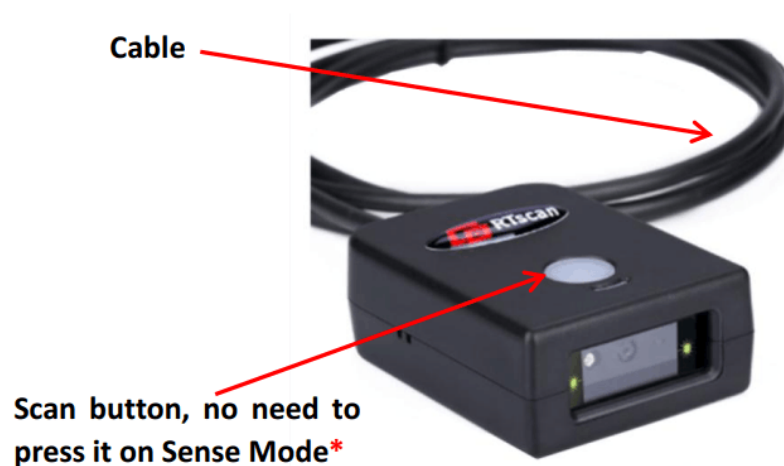
Thank you for choosing RTscan, this guide will help you to use RT230H/RT236/RT231 easily.

Index

1. USB-HID KBW	2
2. USB-COM (USB COM Port Emulation).....	3
3. RS232 Serial Port.....	5
4. Instruction Documents Download.....	7
5. Programming Video Guide.....	7

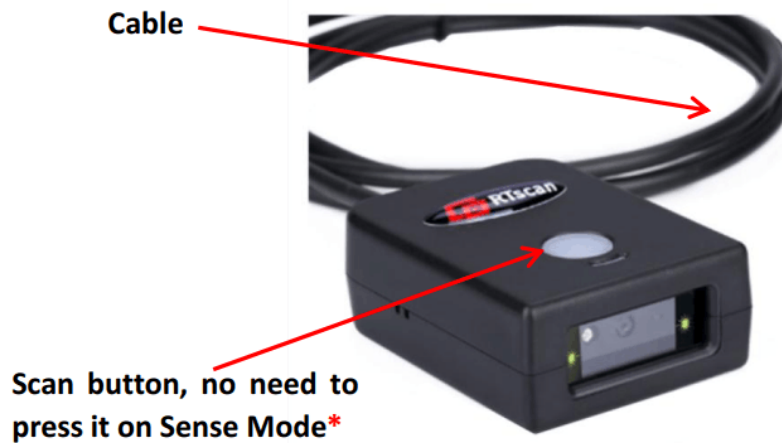
1. USB-HID KBW

If your sample come with USB interface, the default setting is USB-HID KBW, it's plug and play, connect the scanner with your computer and run Notepad / MS Word, after reading the barcode, the decoded data will be shown there.



2. USB-COM (USB COM Port Emulation).

If your sample come with USB-COM (USB COM Port Emulation), you will need to have a software that can work with a virtual serial port to test the scanner.

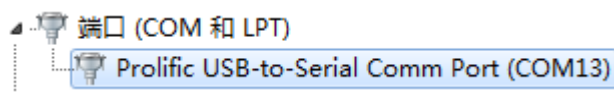


You can use your own Virtual Serial Tool, or download the Virtual Serial Tool at the following link :

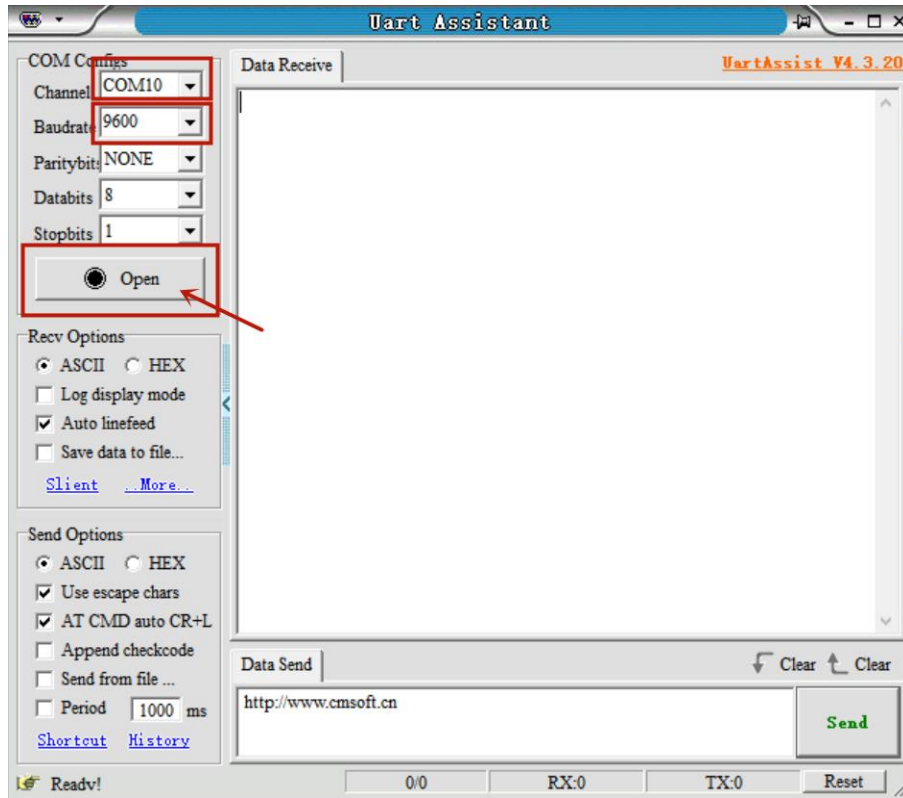
https://drive.google.com/open?id=1djokTmXZJAlDSehhI_7EMugiCazlkP5N

Please do the following steps to use the reader with USB Virtual COM.

- ① Connect the reader with your PC or terminal.
- ② In most cases, the computer will install the driver automatically, if not, please contact our sales to get the driver.
- ③ Confirm the COM port number at Device Manager as below picture, below is the COM13.



- ④ Run a virtual serial port tool, then pick the exact COM port number (like the above is COM13) and also the correct baud rate 9600 (default baud rate is 9600).



3. RS232 Serial Port

If your sample come with RS232 interface, you will need to have a software that can work with a serial port to test the scanner.

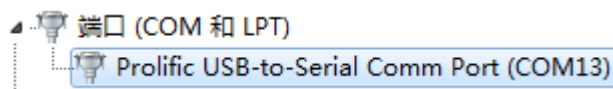


You can use your own Virtual Serial Tool, or download the Virtual Serial Tool at the following link :

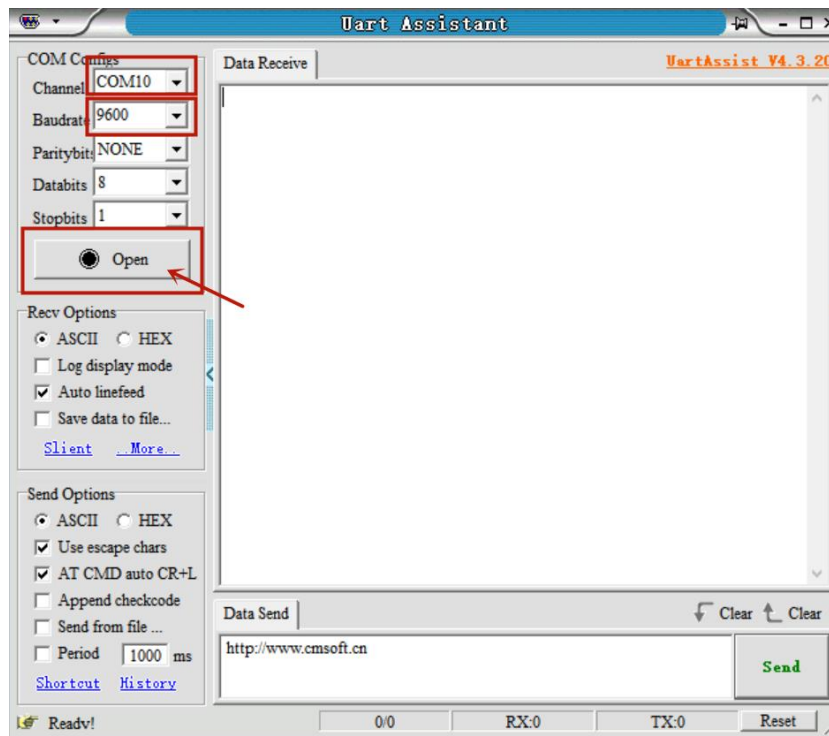
https://drive.google.com/open?id=1djokTmXZJAIDSehhI_7EMugiCazIkP5N

Please do the following steps to use the reader with RS232 serial port.

- ① Connect the reader with your PC or terminal.
- ② Confirm the COM port number at Device Manager as below picture, below is the COM13.



- ③ Run a virtual serial port tool, then pick the exact COM port number (like the above is COM13) and also the correct baud rate 9600 (default baud rate is 9600).



4. Instruction Documents Download

You can kindly download the instruction documents of reader at the following link :

RT236: <https://drive.google.com/file/d/1wVT5dUXLY4ZPSMrHuCbXC12txva7jZ2K>

- User Guide
- Datasheet
- Programming Command Manual

RT231: https://drive.google.com/open?id=1bRP-VGk0PmMpqPo7ta3wW1Lz_KQ6NDi

- User Guide
- Datasheet
- Programming Command Manual

RT230H: https://drive.google.com/open?id=1WDMEMVaRLfo5IPn1EPuHuLEbToe_9wr1

- User Guide
- Datasheet
- Programming Command Manual

5. Programming Video Guide

You can program the barcode reader by setting codes or by commands, kindly refer to our video guide as below.

<https://youtu.be/hNQYgxM50wA> ----Setting code programming guide

<https://youtu.be/aCcBzNHe4ho> -----Command programming guide

If you need any other technical support from RTscan, please feel free to contact us:

justin@rtsan.net, thank you!