

# IDE400 Quick User Guide


Driver install and Demo user guide.

## ❖ Install USB driver

For Win10, we need to disable the driver signature enforcement, but for WinXP, Win7, Win8, no need.

### 1. Windows 10: Disable Signed Driver Enforcement

Windows 10 enforces driver signatures by default. This can be disabled to install drivers that are not digitally signed. Use the following steps to disable driver signature enforcement.

- (1) Click the **Start**  **menu** and select **Settings**.
- (2) Click **Update and Security**.
- (3) Click on **Recovery**.
- (4) Click **Restart now** under **Advanced Startup**.
- (5) Click **Troubleshoot**.
- (6) Click **Advanced options**.
- (7) Click **Startup Settings**.
- (8) Click on **Restart**.
- (9) On the Startup Settings screen press 7 or F7 to disable driver signature enforcement.

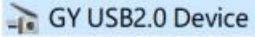
Your computer will restart and you will be able to install non-digitally signed drivers. If you restart your computer again the driver signature enforcement will be re-enabled

### 2. Install driver

Plug in the USB cable and the power adapter, turn on the power switch. The computer will automatically pops up the "find new hardware wizard" interface,

click **cancel**.

From IDE400\01\_Win\Install\, double click to run dinstall.exe.

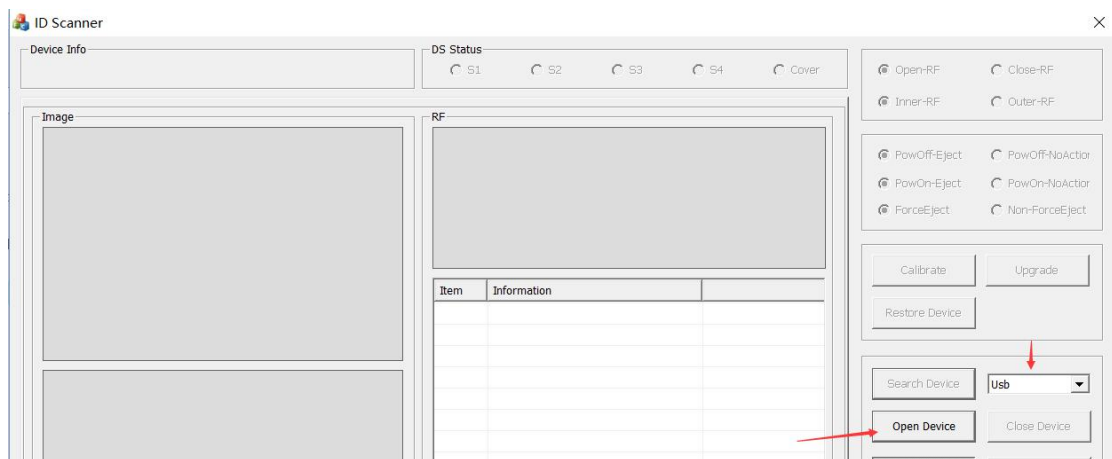
After install properly, we can see  from the Device Manager> Imager device.

When installing the driver, it will choose the correct driver file automatically according to different O.S. and install it accordingly. Since the driver installation will use the operating system interface, it might result in the anti-virus software reminds and alarms. Therefore, please exit the anti-virus software before installing the driver. If any files are isolated or killed by the anti-virus software, please recover these files from the isolated area or trust these killed files, meanwhile exit the anti-virus software and re-install the driver file.

For any alarms, please choose “install”

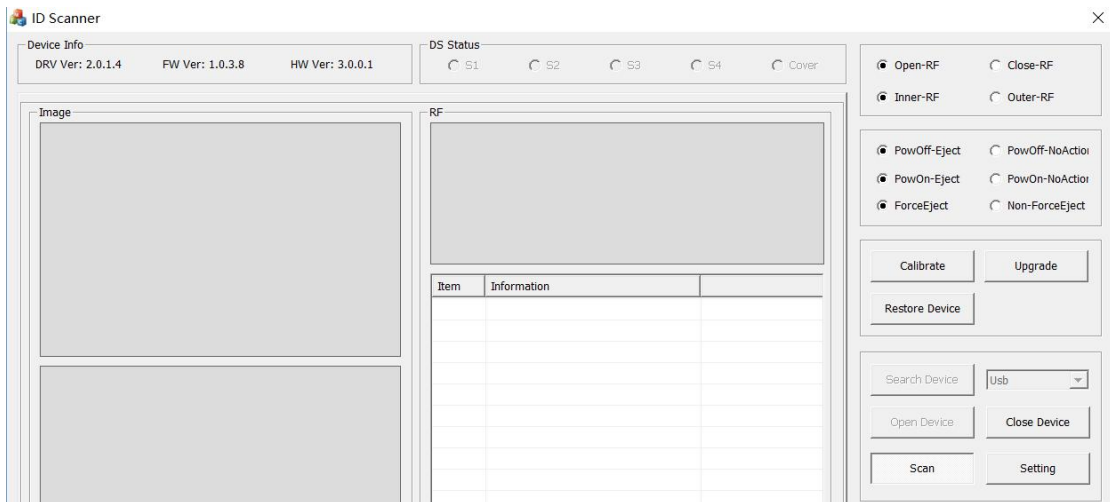
## ❖ Run Demo application

Connect the scanner with computer with USB cable and and power adapter, power it on, then run the demo app, from: IDE400>01\_Win>binR , double click : IDScan-EN.exe.



Then click “Open Device”

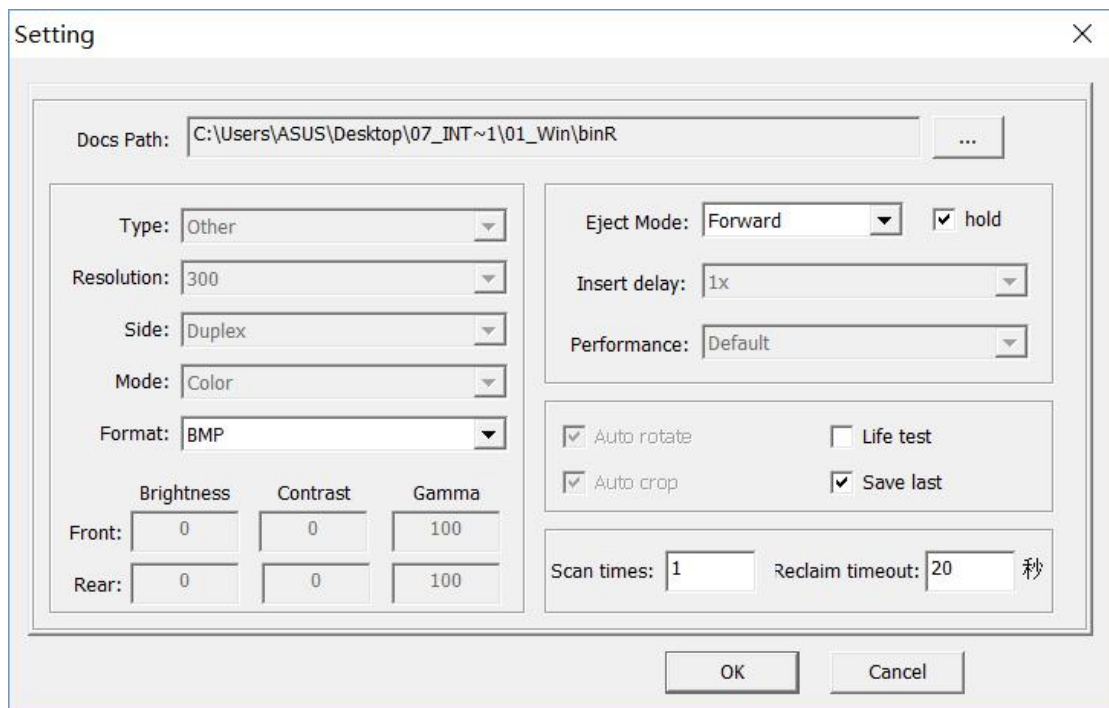
Wait around 2 seconds, it comes to:



This means connect the scanner successfully.  
 Now insert the ID card, the scanner will automatically begin to scan.  
 The scanned image is stored in the folder: 01\_Win>binR

### Setting:

Click the “Setting” button and come to:



### *Eject mode:*

Forward—Eject the card from the front slot; backward—eject the card from the back slot.

**Hold:**

Check—when the scanning finished, the card will be hold by the scanner.

Uncheck—when the scanning finished, the card will fall out of the slot.

**Format:**

Image format can be BMP or JPEG.

**Scan times:**

e.g: if we set 2 times, the card will be scanned two passes before stopping.

**Reclaim timeout:**

You can set a time (second), if the user forgot to take the card within the time, means the user forgot to take back the card, then the scanner will draw back the card and keep it in the kiosk so as to avoid any possible loss of the holder

**Save last:**

Check—save the last scanned image only;

Uncheck—save each scanned image

For any technical support, please email: [support@rtscan.net](mailto:support@rtscan.net)