

Appearance



To turn on device: Keep pressing power button until the device switches on.
 To turn off device: Keep pressing power button during operation until the device shows a menu, select "Power off".
 To turn off display: Press the power button. Device also turn off the display automatically if it reaches the configured time. The configured time can be set up at "Setting→Display→Sleep".
 To turn on the display: Press the power button lightly.

①

Battery Installation



Note: Gently rotate the battery cover clip in quarter-turn motion. Do not apply excessive force.

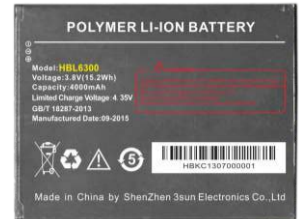
Insert battery in the direction as shown in the picture on the right. Sit the battery tightly in the corresponding position.



③

Battery Operation

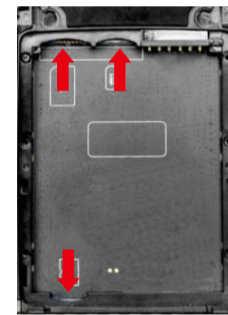
Charge the device and battery with only RTscan's charger. Please avoid a short circuit for the battery. Do not store battery in hot, humid, or corrosive environment. Do not break or crack open the battery. Please store the product with fully charge when it is not in use. Please avoid to store the RT930 with its battery without power. If device is not used for long period of time, remove the battery from the device.



Note:

- 1.If battery is misshapen, or is found leaking, replace the battery immediately.
- 2.The battery should be charged for at least 8 hours before the first use.
- 3.Do not leave the battery charging unattended for long hours, especially after the battery is fully charged.

SIM/TF Cards Installation



- 1.Swing open the main battery cover clip by 90 degrees, you can then remove the battery cover
2. Insert the SIM card or microSD/TF card into their corresponding slots in the battery compartment

Note: You should gently push the SIM/TF card to the correct position without using excessive force.

⑤



②

Battery Charging Instruction



DC Power Adapter

Charging by DC Power Adapter

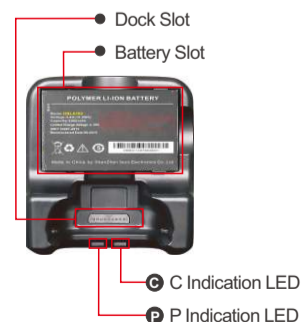
When device is charged using DC power adapter, the power indication LED is red, when fully charged, the LED will turn green



USB Data Communication Cable

Charging by USB Data Communication Cable

Connect the device and computer by USB data communication cable.



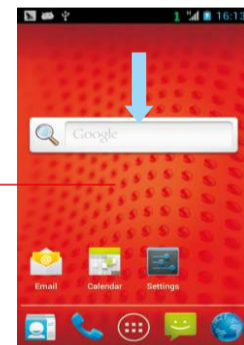
When starts to charge battery, the P indication LED of dock will be green. The red C indication LED will turn green after battery is fully charged.

④

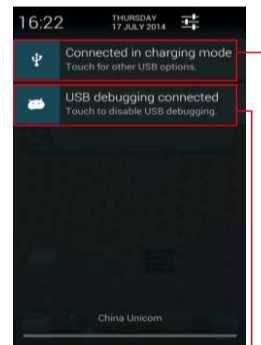
Connecting To PC

After installing the android driver or an android smartphone assistant, the device can be connected to your PC via the provided USB cable.

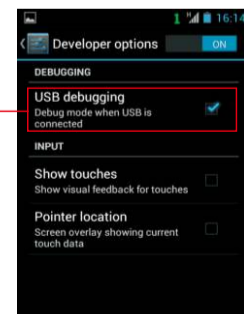
After the device connected to your PC, the screen would display like this:



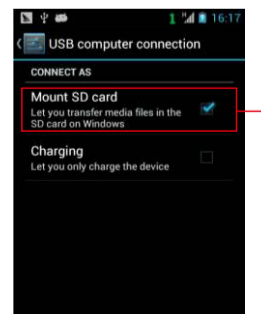
After the device connected to your PC, you could drag the top part of the screen down, to show the USB options.



Select this option to enable / disable USB debugging
 Select this option to enable / disable device as USB storage to the PC



Check this to enable USB debugging.



Check this to enable device as a USB storage to PC.

Note: To download / install software, please select "Connected in charging mode" > SD Card, after that, your computer will detect the RT930's flash memory and SD card (if you installed SD card).

⑥